

DETTAGLI

- Elastico e coulisse in vita
- 2 tasche
- 1 tasca sul retro

TAGLIE

XS ÷ 4XL
Slim Fit

COLORE

F014 Travel
F013 Gufi indiani

TESSUTO

100% cotone
168 g / m²



Le misure indicate si riferiscono alle taglie **S** per i capi femminili, **L** per i capi maschili. Per i capi a taglia unica le misure indicate sono effettive.

Il pantalone Alan è un grande classico Giblor's: pantalone unisex a vita alta, dall'ottima vestibilità Slim Fit, amato per il taglio asciutto della gamba. Presenta due tasche sui fianchi, una piccola tasca posteriore, un elastico da 4 cm ed una coulisse a cingere la vita.

COLORI DISPONIBILI



F014 Travel



F013 Gufi indiani

TABELLE TAGLIE
E CORRISPONDENZE

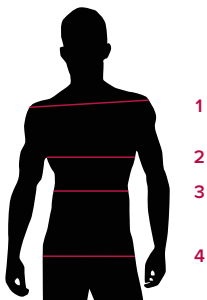
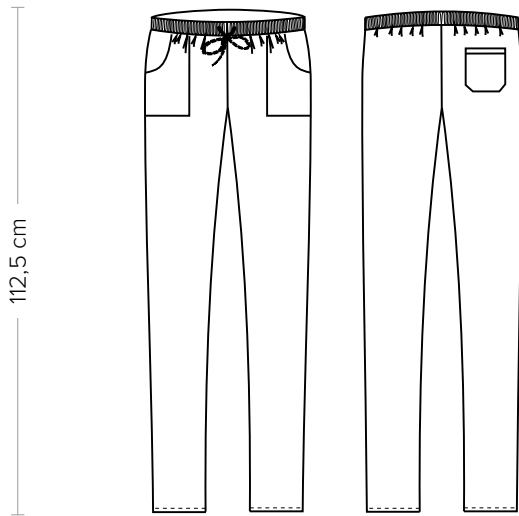


TABELLA ST-P2 SLIM FIT

| TAGLIA | XXS | XS | S | M | L | XL | XXL | 3XL | 4XL | 5XL |
|------------|-------|-------|--------|---------|---------|---------|---------|---------|---------|---------|
| 1 - SPALLE | | | | | | | | | | |
| 2 - TORACE | | | | | | | | | | |
| 3 - VITA | 72-81 | 81-85 | 85-89 | 89-93 | 93-97 | 97-103 | 103-109 | 109-115 | 115-121 | 121-129 |
| 4 - BACINO | 87-91 | 91-95 | 95-100 | 100-104 | 104-108 | 108-115 | 115-121 | 121-127 | 127-133 | 133-140 |

GUIDA ALLE TAGLIE **1)** Prendere le misure anatomiche (corpo con abbigliamento intimo) senza stringere mantenendo ben teso il metro. **Nota:** nel caso vogliate indossare dei camici già con dell'abbigliamento sotto prendete le misure già abbigliati. **2)** Nel caso tra le misure prese vi fosse una misura a cavallo fra 2 taglie vi consigliamo di prendere quella più grande. **3)** Le misure della tabella sono espresse in centimetri.



DETAILS

- Elasticated waistband with drawstring
- 2 pockets
- 1 rear pocket

SIZES

XS ÷ 4XL
Slim Fit

COLOURS

F014 Travel
F013 Indian owls

FABRIC

100% cotton
168 g / m²



The measures indicated refer to sizes **S** for women, **L** for men. For one-size-fits-all garments, the measurements indicated are effective.

The Alan trousers are a great Giblor's classic: high-waisted unisex trousers, with an excellent Slim Fit, loved for the Slim Fit of the leg. It has two pockets on the sides, a small back pocket, a 4 cm elastic and a drawstring around the waist.

AVAILABLE COLOURS



F014 Travel



F013 Indian owls

SIZE TABLES AND CORRESPONDENCES

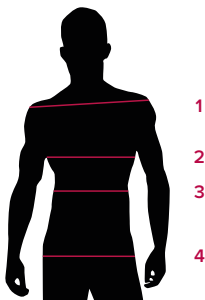


TABLE ST-P2 SLIM FIT

| SIZE | XXS | XS | S | M | L | XL | XXL | 3XL | 4XL | 5XL |
|---------------|-------|-------|--------|---------|---------|---------|---------|---------|---------|---------|
| 1 - SHOULDERS | | | | | | | | | | |
| 2 - CHEST | | | | | | | | | | |
| 3 - WAIST | 72-81 | 81-85 | 85-89 | 89-93 | 93-97 | 97-103 | 103-109 | 109-115 | 115-121 | 121-129 |
| 4 - HIPS | 87-91 | 91-95 | 95-100 | 100-104 | 104-108 | 108-115 | 115-121 | 121-127 | 127-133 | 133-140 |

SIZE GUIDE **1)** Take the anatomical measurements (body with underwear) without tightening, keeping the measuring tape taut. Note: in case you want to wear of the gowns already with the clothing underneath take the measurements already dressed. **2)** If there is a measure between 2 sizes between the measurements taken, we advise you to take the bigger one. **3)** The measurements in the table are expressed in centimeters.